



pearson
ferrier®



26 RIBBLE DRIVE
Manchester, M45 8WJ
Offers In The Region Of £190,000

26 RIBBLE DRIVE

Property at a glance

- deceptively spacious townhouse
- three generous sized bedrooms
- PVC double glazing & GCH system
- spacious lounge
- modern dining kitchen with integrated appliances
- separate WC modern family bathroom
- conveniently placed for easy access to all local amenities including Whitefield met station and the nearby motorway networks
- large rear garden

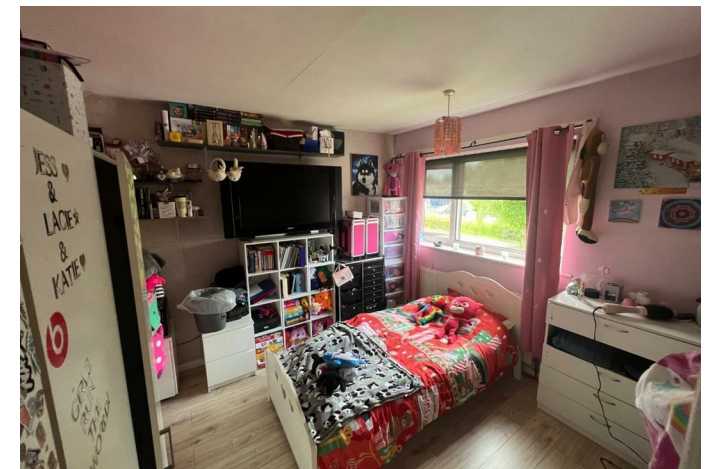
A deceptively spacious three bedroom mid townhouse conveniently placed for easy access to all amenities including nearby schools, shops and transport networks including Whitefield met station and the nearby motorway networks providing easy access to and from Manchester City centre and surrounding areas. Further features include: PVC double glazing, gas central heating system, spacious lounge, modern fitted kitchen with integrated appliances, three generous sized bedrooms, separate WC and a modern family bathroom. Outside - lawned garden to the front and a large mature lawned garden to the rear. The accommodation briefly comprises: hallway, lounge, kitchen, first floor, three generous sized bedrooms, separate WC and modern family bathroom. Outside - lawned garden to the front and a large mature lawned garden to the rear.

Additional Information:

Tenure - Freehold

Council Tax band B payable to Bury MBC. Council Tax rates amount for 2023/2024 = £1695.21

EPC Rating: C





Radcliffe Office
 44 Blackburn Street Radcliffe, Manchester, M26 1NQ
 Telephone: 0161 725 8155
 Fax: #
 Email: radcliffe@pearsonferrier.co.uk

www.pearsonferrier.co.uk

All statements contained in these particulars are for indicative purposes only and are made without responsibility on the part of Pearson Ferrier and the vendors of this property and are not to be relied on as statements or representations of fact. Potential purchasers should satisfy themselves by inspection or otherwise as to the accuracy of such details contained in these particulars.

